

# HUDSON REEF

---

Parks, Recreation, and Natural Resources

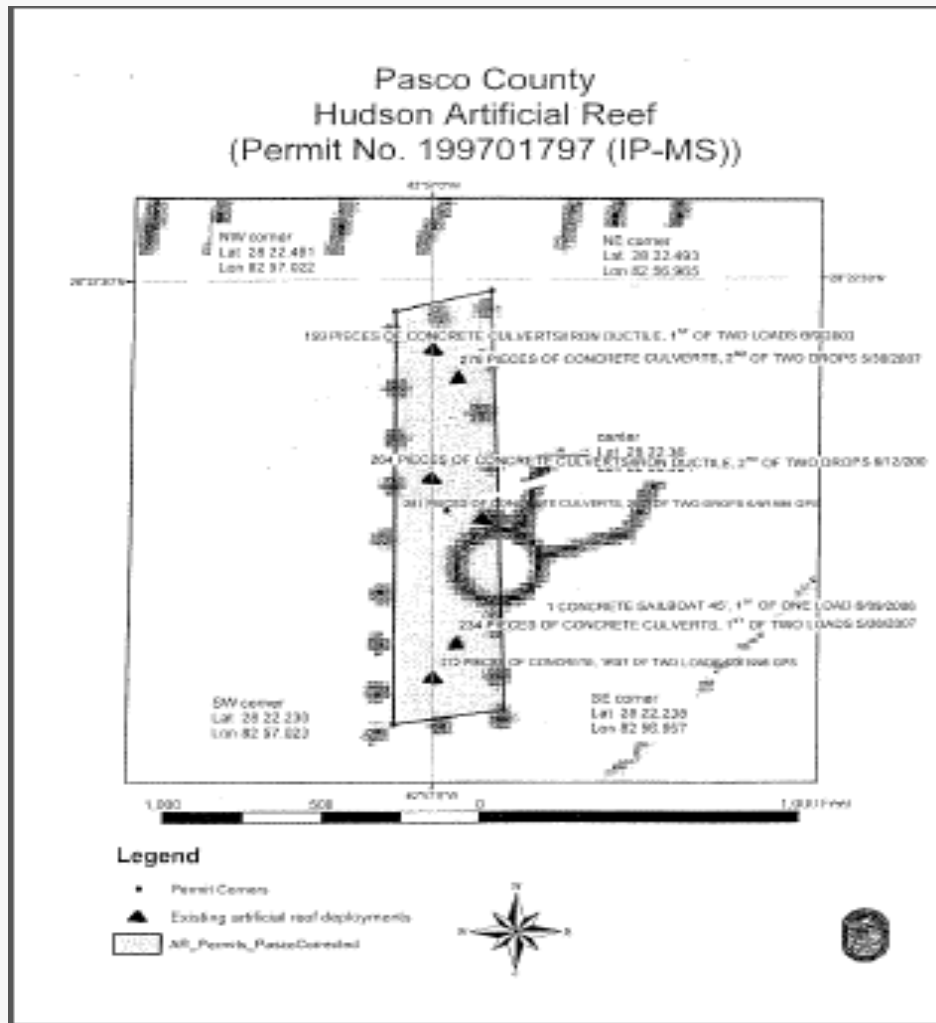
# Project Components

- Located 12 miles west of Hudson Boat Launch.
- Original deployment completed between 1998 and 2008.
- Re-permit the reef!
- Arrange for contractor to deploy reef materials at site.
  - Amount of materials driven by funding.
  - Currently have 6 sites identified in the reef area to deploy to.

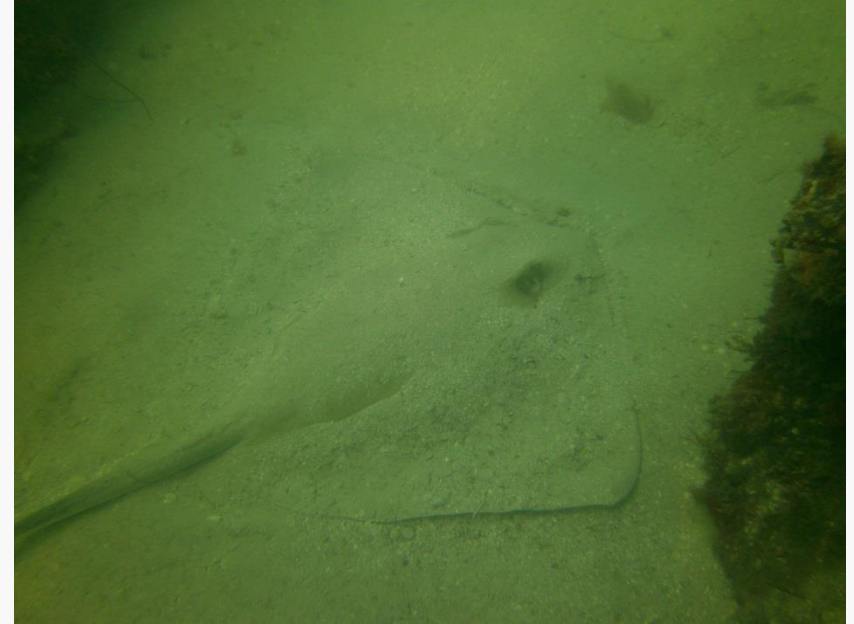
Materials can be squash pipe, concrete rubble, concrete filled boats or other materials depending on funding available.

Reef assessment in 2016 showed >95% of materials had 2 inches or more of growth in addition to large amounts of bait and game fish.

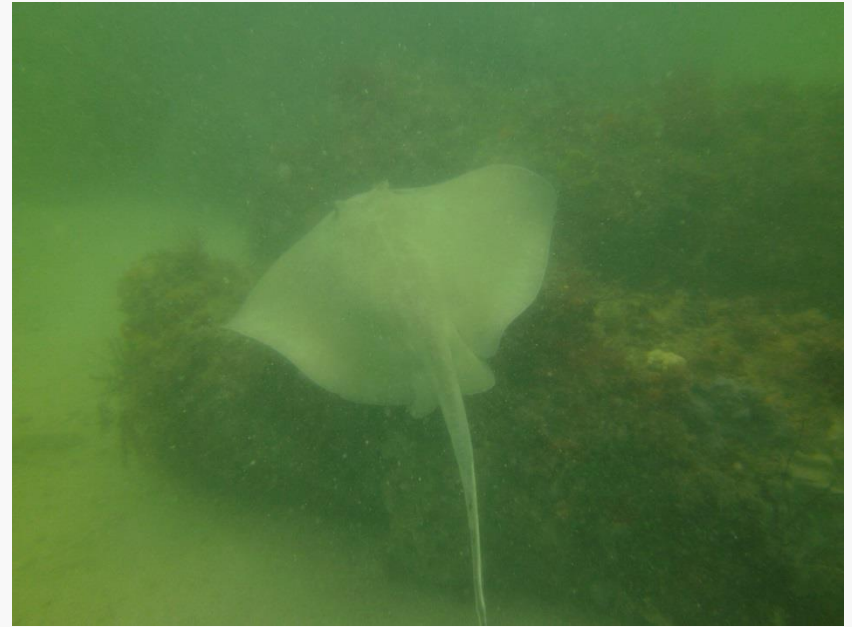
# Current Reef Layout



# Photos from 2016 Reef Assessment!



# Photos





# Applicability to RESTORE

## ➤ 1. Provides Restoration and Protection of Natural Resources (NR)

- Long term benefits greater than 20 years (as proven in the last reef assessment)!
- Breeding areas for juvenile game fish and bait fish
- Provides cover for bait fish.

## ➤ 2. Mitigates damage to fish, wildlife or natural resources

- Project intentionally halts existing impacts. It provides long term direct impact with a positive impact to recreational and commercial fishing.

# Applicability Continued.....

- 3. Implements a federally approved marine or coastal plan.
  - Conforms and meets the National Artificial Reef Plan as outlined by NOAA.
  - Supported by the Florida Fish and Wildlife Artificial Reef Plan.
- 4. Workforce Development and Creation
  - Positively affects local marine based economies. Tourism draw potential to the area!
- 6A. Infrastructure Projects Benefitting Economy
  - Positive benefit is realized by a more than one neighborhood. As part of the larger plan, the whole state benefits!
- 6B. Infrastructure Projects Benefitting Ecological Resources
  - Project has a direct measurable benefit to an ecological resource with benefit, enhancement, or restoration goals, and the benefit corrects a deficiency or restores a function to at least (75% of such goals).

# Applicability to RESTORE

## ➤ 9. Promotes Tourism and Recreational Fishing

- Some effect on tourism expected on a seasonal basis. Some economic income for the local area or city created as well as for small businesses.
  - Fishing location is used frequently!
  - “Catching Hell” television show about commercial spear fishing was based in Hudson, Florida. The show filmed the divers at this site!
  - Supports Diving in the local community.