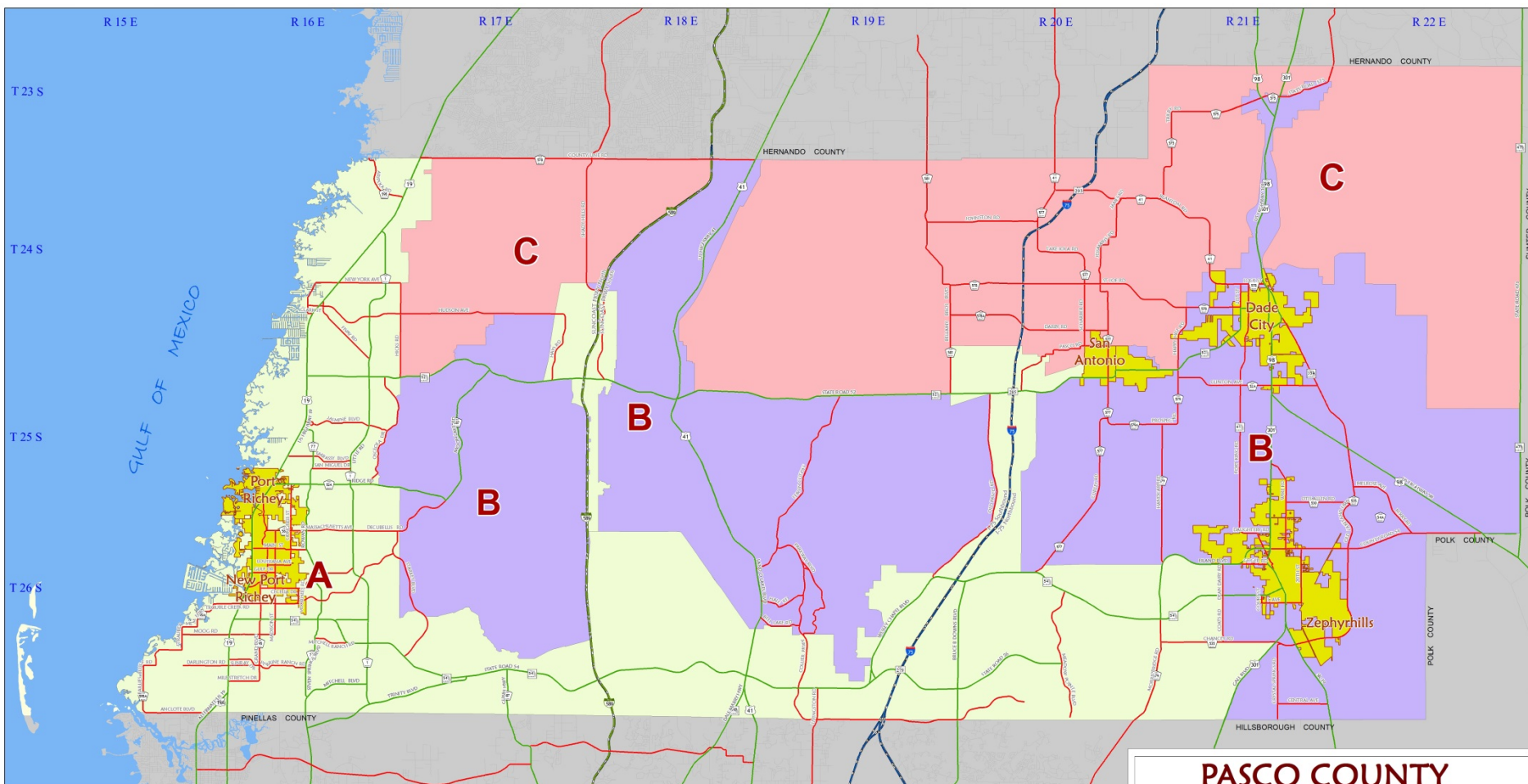


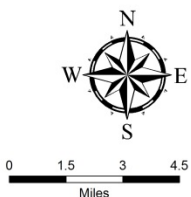
# MAP 1302.2-A



## PASCO COUNTY MOBILITY FEE ASSESSMENT DISTRICT

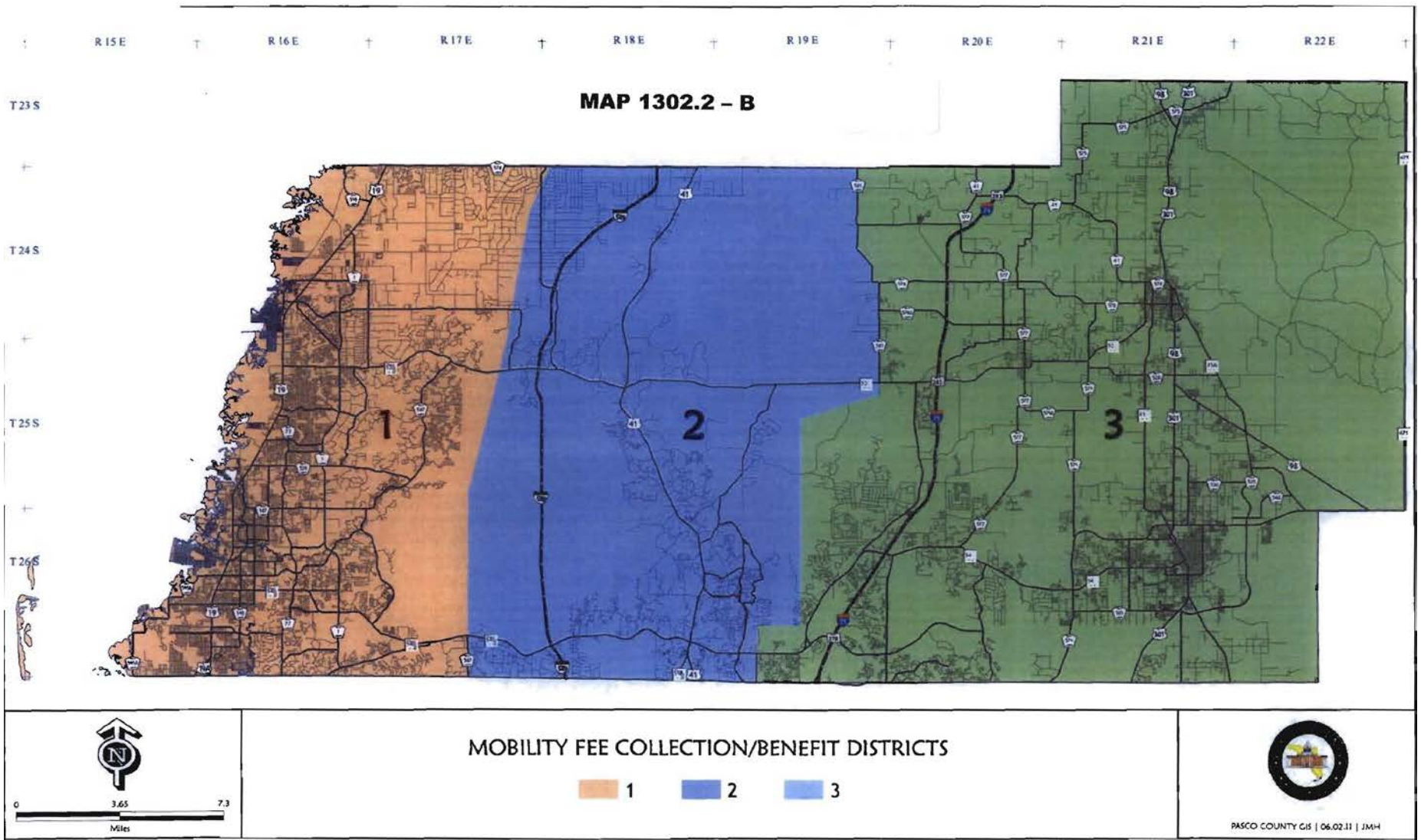
**Pasco County, Florida**  
Geographic Information Systems  
(G.I.S.)  
8731 Citizens Dr  
New Port Richey, FL 34654

<b>Author</b>	AIKHUORIA	This map is for informational purposes only. The data contained herein is not collected under the supervision of, or approved by, a licensed surveyor. It is not intended for any legal use. The data does not meet the minimum technical standards under the Florida Administrative Code 61G17-6. The Pasco County Board of County Commissioners does not accept any responsibility for errors or omissions of any kind contained in the data herein. All products and derivations from the data contained herein must retain this disclaimer.
<b>Date</b>	10/08/2014	
<b>Revised</b>	03/27/2015	

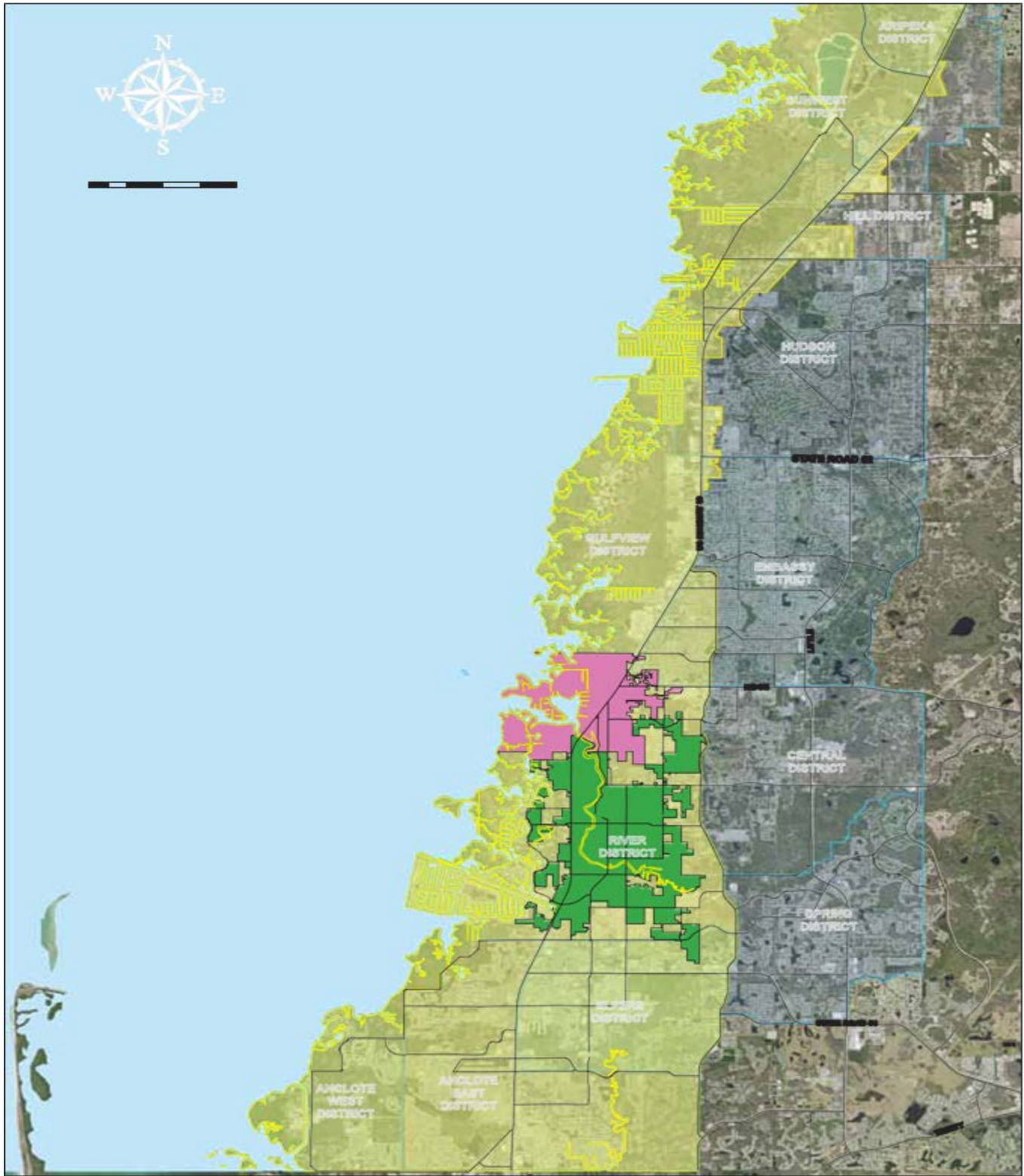


- A - URBAN
- C - RURAL
- ARTERIAL
- INTERSTATE
- B - SUBURBAN
- CITY LIMITS
- COLLECTOR
- TOLL

# MAP 1302.2-B



# MAP 1302.2-B



## 1302.2 - C

### Proposed Harbors/West Market Area Vacant Parcels Incentive Zone Pasco, FL



This map is for informational purposes only. The data contained herein is not intended to be used for any other purpose, including but not limited to, zoning, land use, or other regulatory purposes. The Pasco County Board of County Commissioners and the Pasco County Board of Planning and Economic Development are not responsible for any errors or omissions on this map. The Pasco County Board of County Commissioners and the Pasco County Board of Planning and Economic Development are not responsible for any errors or omissions on this map. The Pasco County Board of County Commissioners and the Pasco County Board of Planning and Economic Development are not responsible for any errors or omissions on this map.

- Harbors Vacant Parcels Incentive Zone
- New Port Richey
- Port Richey
- Harbors Districts
- Arterial
- Collector



Serving Our Community  
to Create a Better Future