

Land Acquisition Flowchart

* Process does not guarantee acquisition *

Definitions

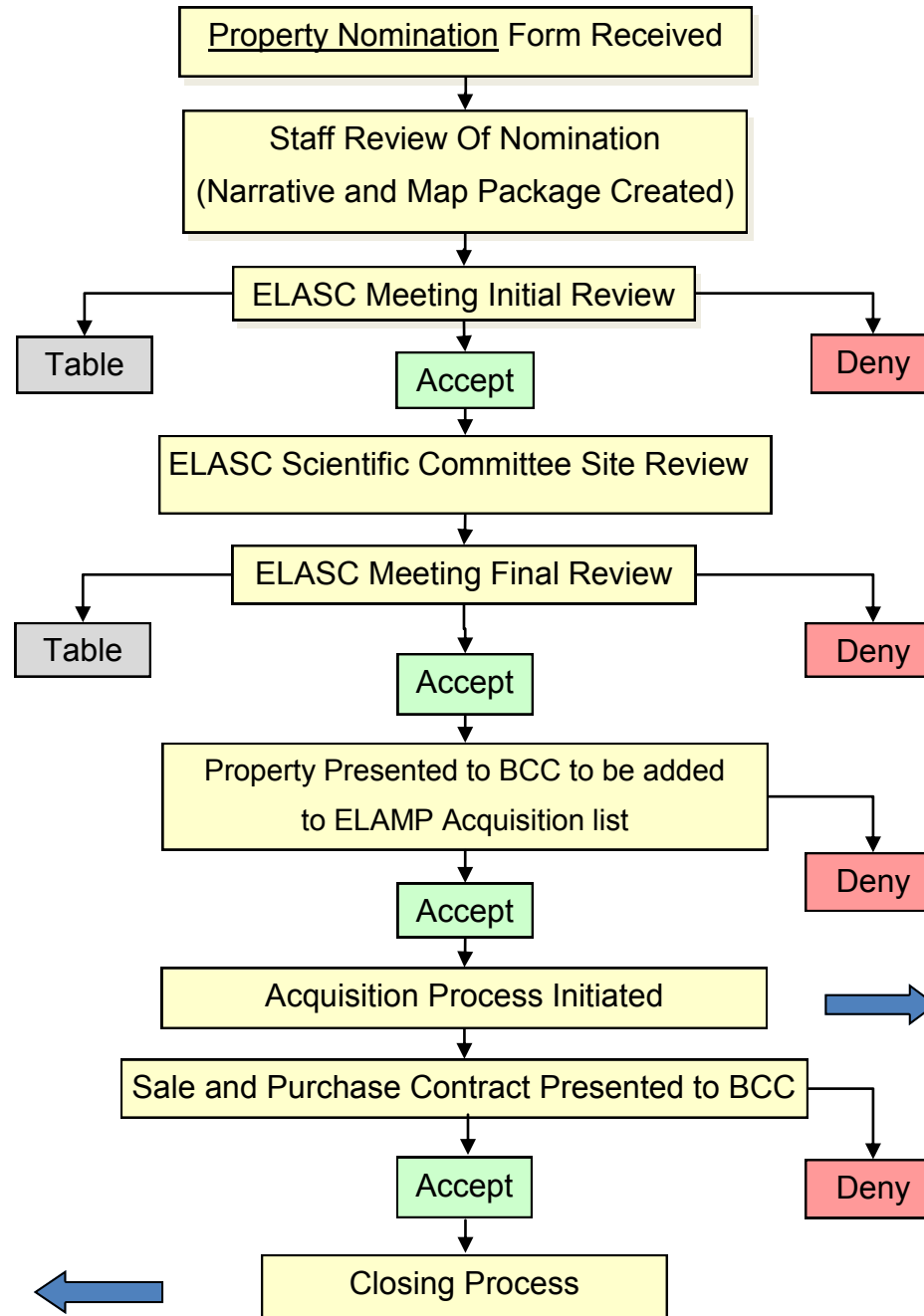
BCC– Board Of County Commissioners

ELASC– Environmental Lands Acquisition Selection Committee

ELAMP– Environmental Lands Acquisition Management Program

Important Notes

- * ELASC Meetings are bi-monthly
- * Calendar of County meetings
- * The time frame from nomination to closing is typically 1 year



Closing Process

1. Environmental Site Assessment Performed
2. Boundary Survey Performed
3. Legal Documents Prepared
4. Closing Date Scheduled
5. Funds Requested from County Clerk
6. Closing & Deed Recorded

Acquisition Process

1. Appraisal(s) Obtained
2. Ownership and Encumbrance Report ordered
3. Appraisal Review (if required)
4. Review by Real Property team
5. Negotiations leading to possible offer
6. If accepted, proceed to next step